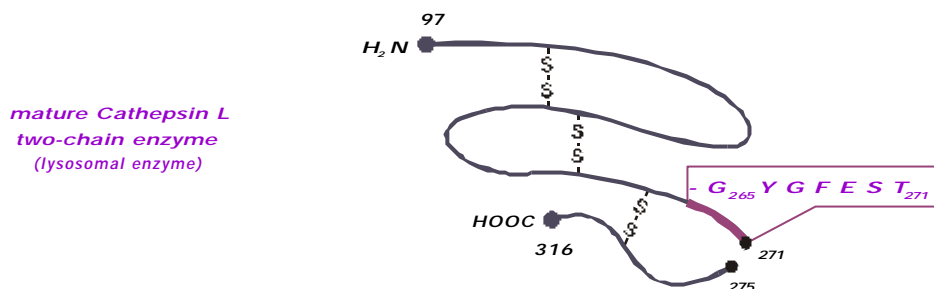

Monoclonal Antibody to Human Cathepsin L / Procathepsin L

Clone: CPLH 33/2
Code: AB-CL-2003
Isotype: Mouse, IgG₁, k



Immunogen: Purified human procathepsin L (source: culture supernatant of non-small cell lung cancer cell line EPLC 32 M1)

Specificity: Epitope: G₂₆₅ Y G F E S T₂₇₁ of human procathepsin L
Recognizes mature human single or two chain cathepsin L (heavy chain) and procathepsin L.
The antibody also recognizes rat cathepsin L and weakly mouse procathepsin L.

The antibody was tested in several dilutions in a direct ELISA on plates coated with human cathepsin L and rat cathepsin L. Absorbance values fell below 50 % of the maximal value at dilutions of 1 : 12 800 or 6 400 (rat).
Antibody was tested for cross-reactivities with the following human proteins, in ELISA against:
mature cathepsins B, H, K, S, procathepsin F, S, W,
and in Western blotting against:
mature cathepsins B, H, S, and the aspartate proteinase cathepsin D,
procathepsin B and S and procathepsin D,
The antibody showed no cross-reactivity with these proteins.

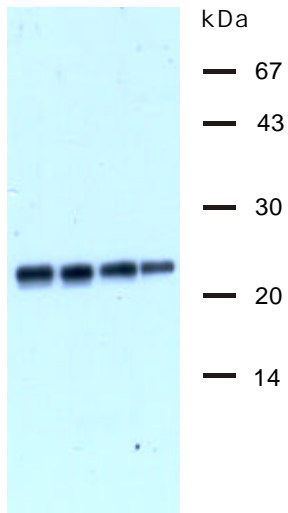
Applications: As catcher antibody in an ELISA for the detection of human cathepsin L and procathepsin L, in Western blotting for the detection of human cathepsin L and procathepsin L in cell culture supernatants and tissue homogenates, in immunohistochemistry (paraffin sections after microwave treatment).

Presentation: Purified (Protein G)
100 µg in 100 µl PBS / 0.01 % Thimerosal

Storage: Store at 2 – 8° C. **Do not freeze !**

Dilutions: Working dilutions should be determined by titration assays.

The examples given below may be used as guidelines for finding an appropriate dilution.



mAb 33/2

Detection of purified human cathepsin L
(100 ng per lane)

Western blot (ECL)

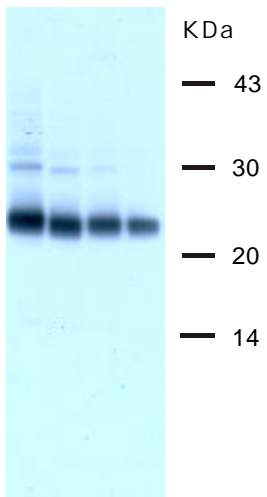
Antibody dilutions

Lane 1: 1 : 20 000

Lane 2: 1 : 50 000

Lane 3: 1 :100 000

Lane 4: 1: 200 000



mAb 33/2

Detection of human cathepsin L in kidney parenchyma homogenates

Western blot (ECL)

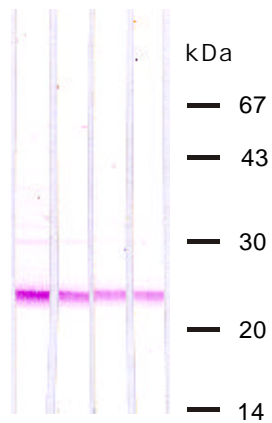
Antibody dilutions

Lane 1: 1 : 10 000

Lane 2: 1 : 25 000

Lane 3: 1 : 50 000

Lane 4: 1: 100 000



mAb 33/2

Detection of human cathepsin L in kidney parenchyma homogenates

Western blot (NBT)

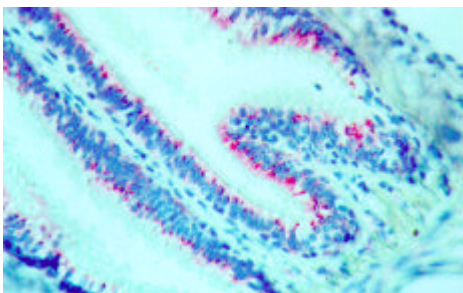
Antibody dilutions

Lane 1: 1 : 10 00

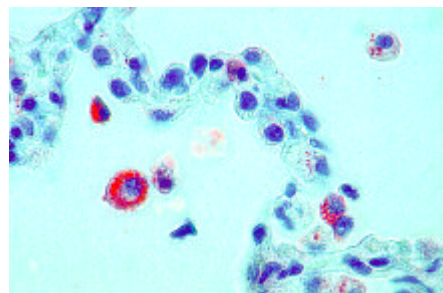
Lane 2: 1 : 25 000

Lane 3: 1 : 50 000

Lane 4: 1: 100 000



A



B

Immunostaining with mAb 33/2 of normal human lung epithelium (A) and alveolar macrophages (B)

(Courtesy Dr.F.Buehling, Magdeburg)

Contact:

MoBiTec GmbH Lotzestrasse 22a D-37083 Göttingen Germany	Phone: +49 551 707 22-0 Fax: +49 551 707-22 Email: info@mobitec.com WWW: www.mobitec.com
--	---

Manufactured by Labsoft Diagnostics AG, Germany